

# The Role of Philanthropy in Fostering Collaboration through Cross-Sector Networks

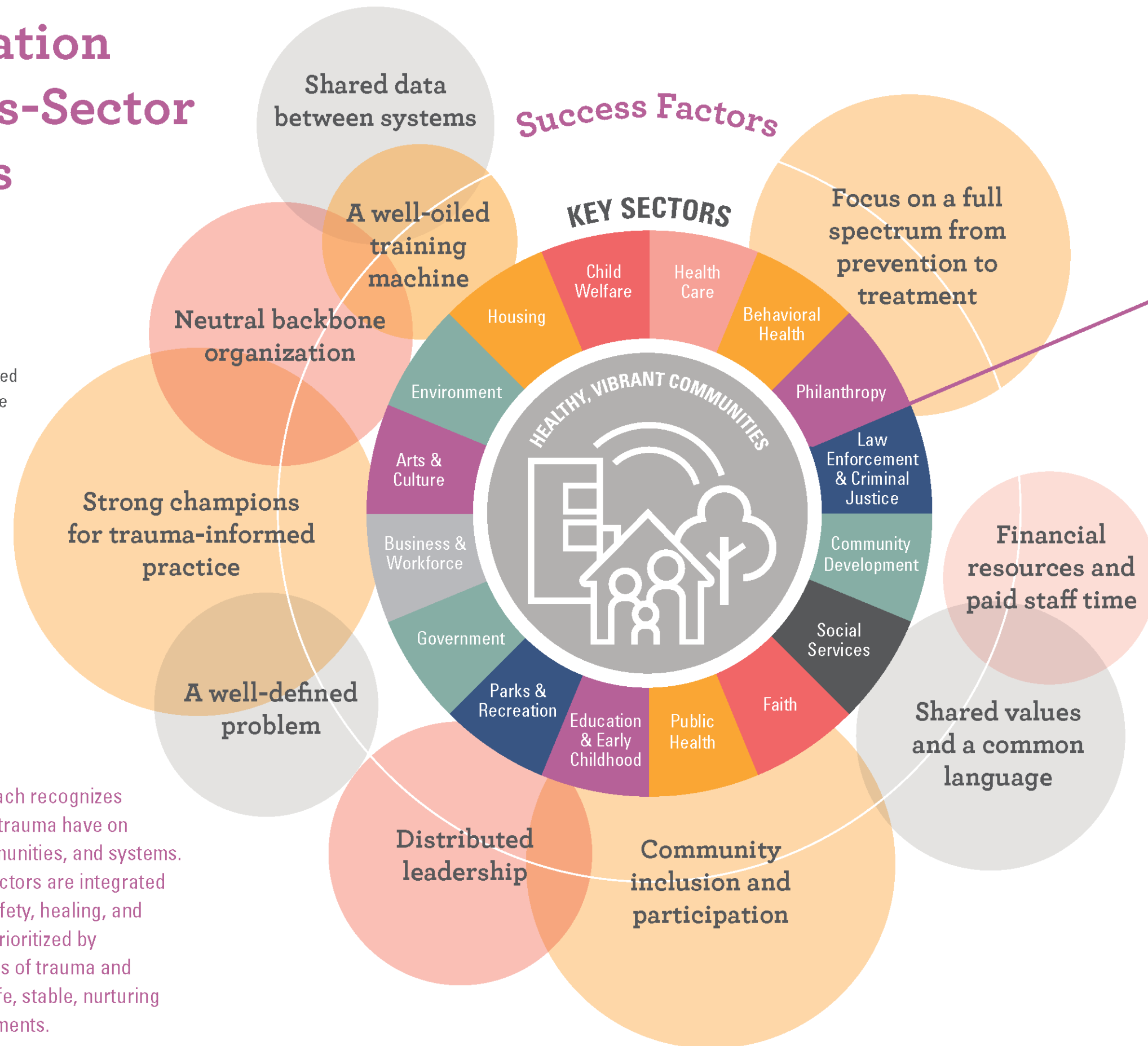
A companion to  
*Trauma-Informed Philanthropy*

# Collaboration and Cross-Sector Networks

ACEs and trauma are complex issues deeply rooted in social conditions, which no one organization or sector alone can transform. Real change can only occur with multifaceted strategies that capitalize on the unique expertise of diverse stakeholders.

Collaboration is critical to building trauma-informed, resilient communities. Cross-sector networks facilitate and accelerate the development of collaborative relationships.

A trauma-informed approach recognizes the impact that ACEs and trauma have on individuals, families, communities, and systems. Services from different sectors are integrated and aligned to promote safety, healing, and resilience. Prevention is prioritized by addressing the root causes of trauma and creating conditions for safe, stable, nurturing relationships and environments.



## the role of philanthropy

### PROVIDE FUNDING

- General operating support
- Project-based initiatives
- Evaluation support

### CHAMPION THE CAUSE

- Act as an amplifier for the work of the network

### FOSTER COLLABORATION

- Open lines of communication between different organizations both within and across sectors

# Continuum of Collaborative Relationships Facilitated by Cross-Sector Networks

**NETWORKING**  
Exchanging information at stakeholder convenings virtually and in-person



**COORDINATING**  
Aligning work from multiple organizations toward a set of common goals



**COOPERATING**  
Sharing resources among multiple organizations toward a set of common goals



**COLLABORATING**  
Enhancing capacity of multiple organizations through shared responsibility and accountability for project tasks, metrics, and goals



INFORMATION EXCHANGE

MEANINGFUL SHARED WORK

For more information about how philanthropy can foster collaboration through cross-sector networks, read part 2 of *Trauma-Informed Philanthropy, Volume 2* (pg 26-32).

**SCATTERGOOD**  
THINK|DO|SUPPORT  
ScattergoodFoundation.org

Smarter giving. Greater good.  
**philanthropy**  
**NETWORK**  
GREATER PHILADELPHIA  
PhilanthropyNetwork.org

United Way  
of Greater Philadelphia  
and Southern New Jersey  
**United Way**  
UnitedForImpact.org

 **HEALTH FEDERATION**  
OF PHILADELPHIA  
The keystone of community health since 1983  
HealthFederation.org

  
**Robert Wood Johnson**  
Foundation  
RWJF.org

 **THE CALIFORNIA**  
**ENDOWMENT**  
CalEndowment.org